

# Duane Park Restoration Project: Celebrating 225 years

July 20, 2021  
Community Board 1

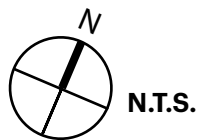














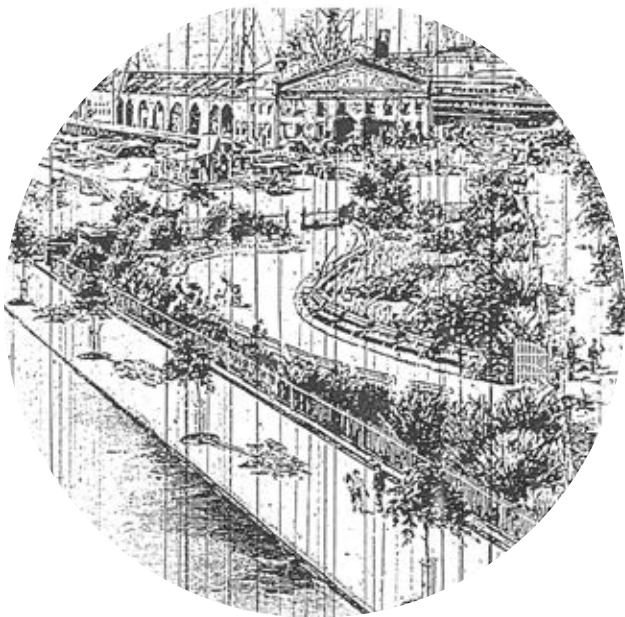






Duane Park in 2020





**1797**

**City purchased the land:**

- Duane Park created and set aside as public park.

**1871**

**Duane Park renovated:**

- trees and shrubs added
- perimeter sidewalk with trees added
- fenced enclosure added

**1886-88**

**Duane Park redesign by Calvert Vaux:**

- meandering pathways
- promoted feeling of quiet and restfulness
- “seclusion and sense of quasi ownership”

**1940**

**Duane Park redesign:**

- formalistic design
- portions of planted area replaced with paving
- tall flagpole added

**1954**

**Duane Park area reduced:**

- western tip of the park and southern sidewalk replaced by roadway

**1998**

**Friends of Duane Park redesign:**

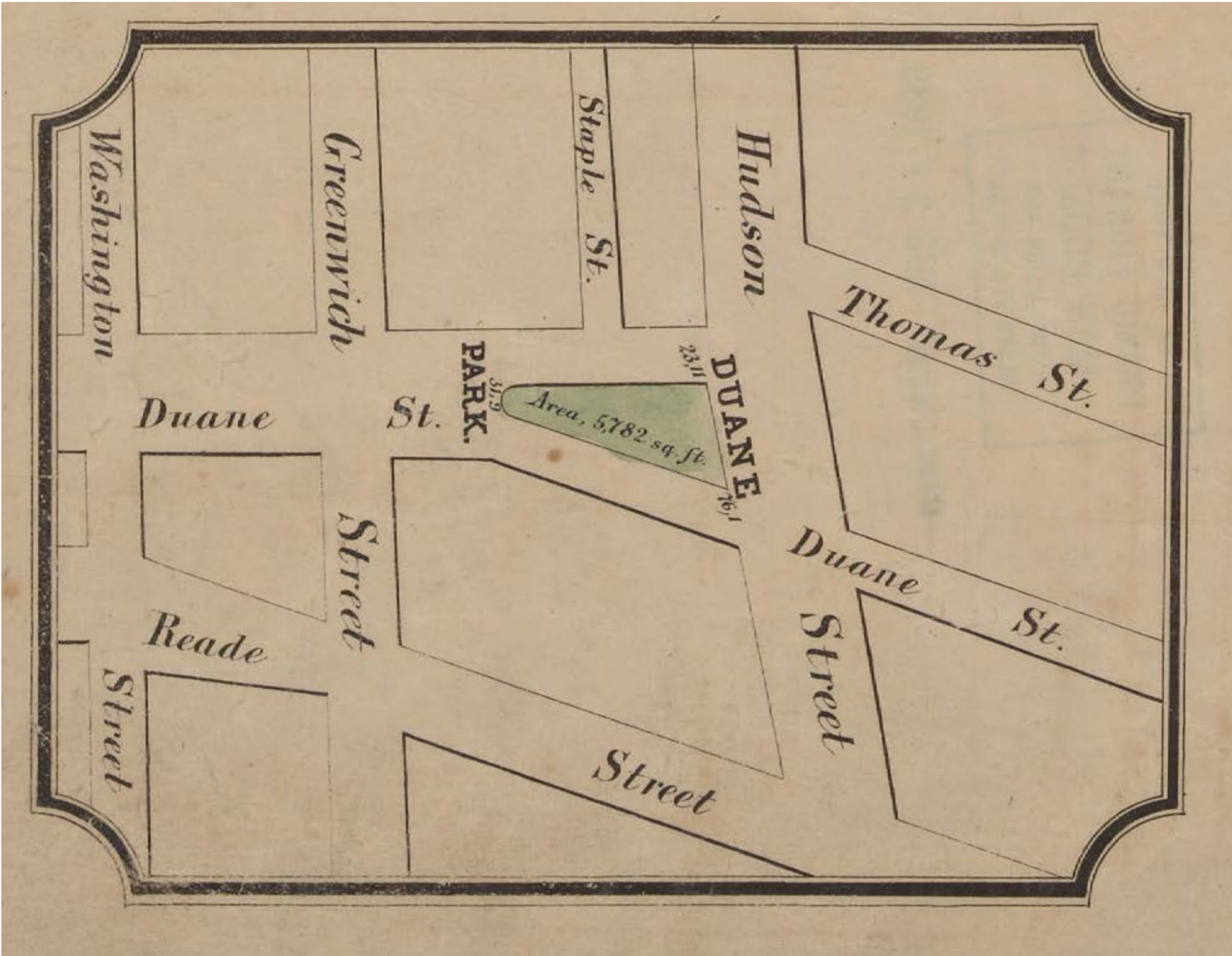
- evoked Vaux design through a reestablished meandering pathway
- expanded planting areas

**2021-22**

**Celebrating 225 years of Duane Park**

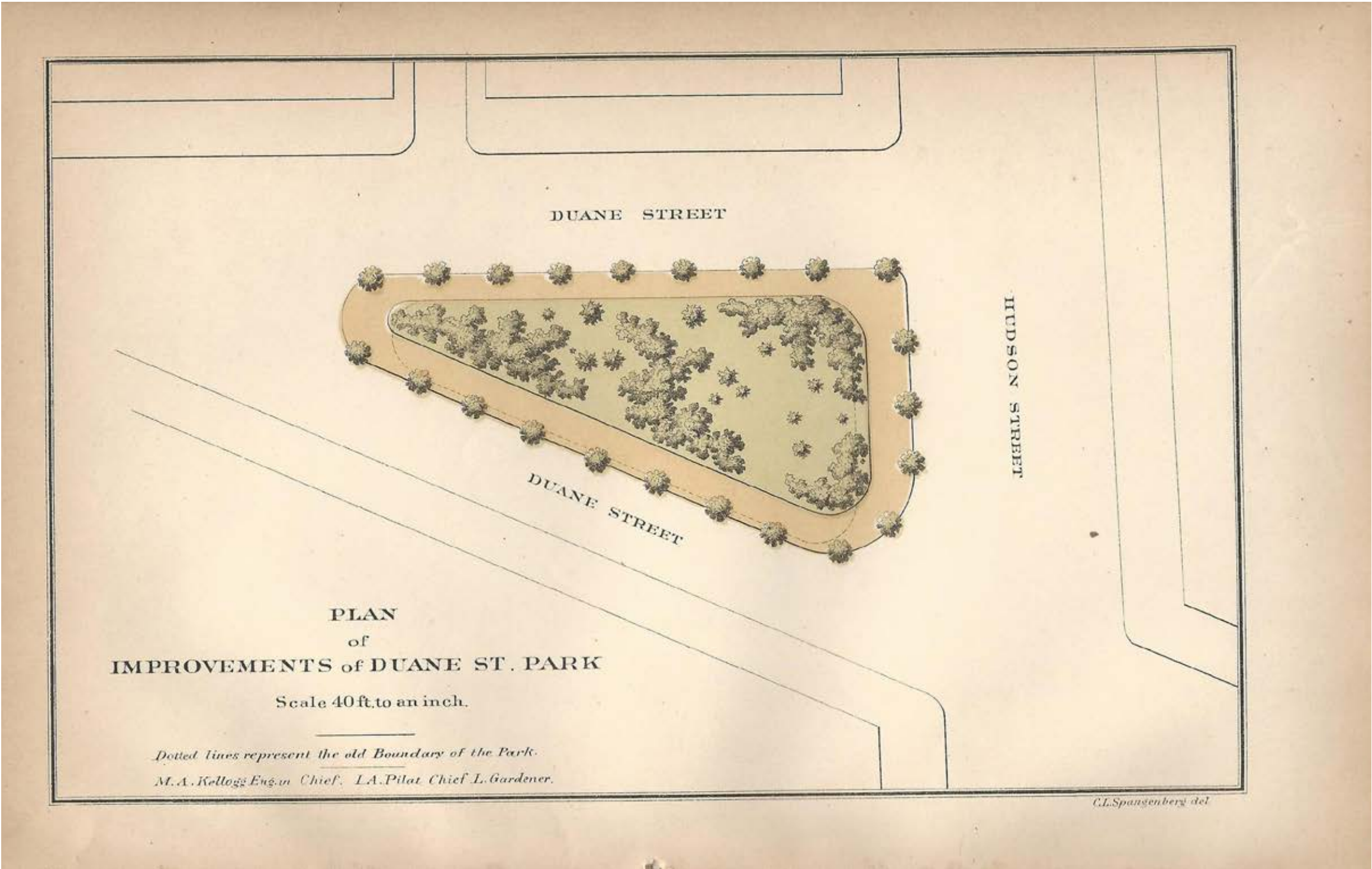
Left to right: Canal Street Park by Vaux (no image of Duane Park of the period exists), Duane Park in 1944, Duane Park in 2020





Lionel Pincus and Princess Firyal Map Division, The New York Public Library. "Public squares, parks, and places in the City of New York." The New York Public Library Digital Collections. 1852



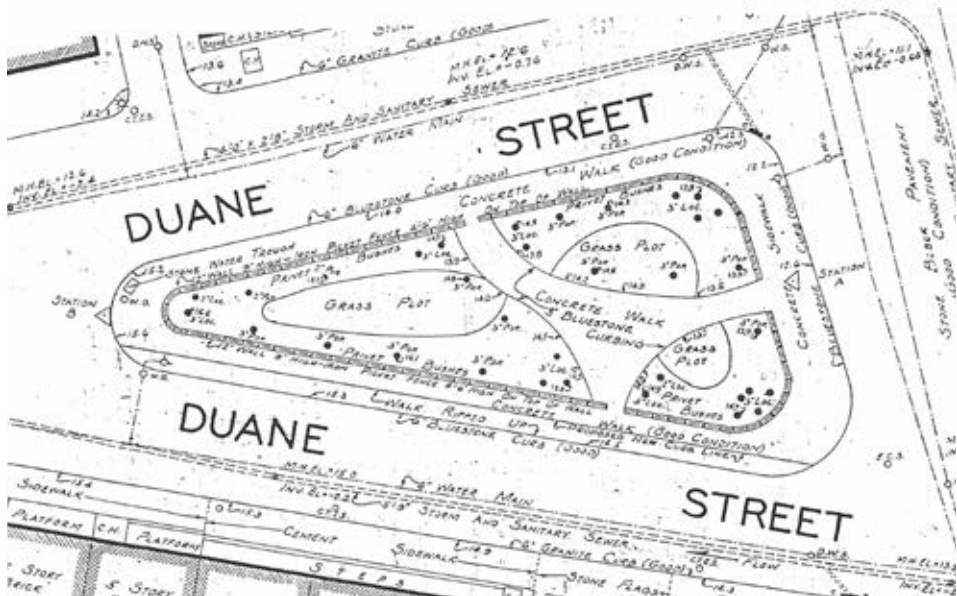


Plan of Improvement to Duane Park, 1871





Duane Park, 1882-1919

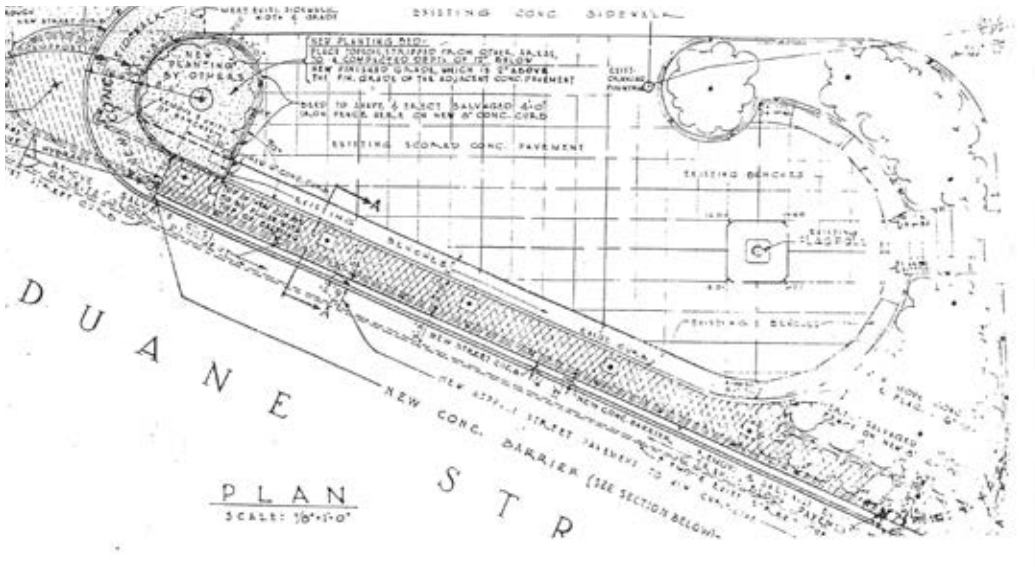


Duane Park, 1934 Plan





Duane Park, before 1998



Duane Park, 1954 Plan





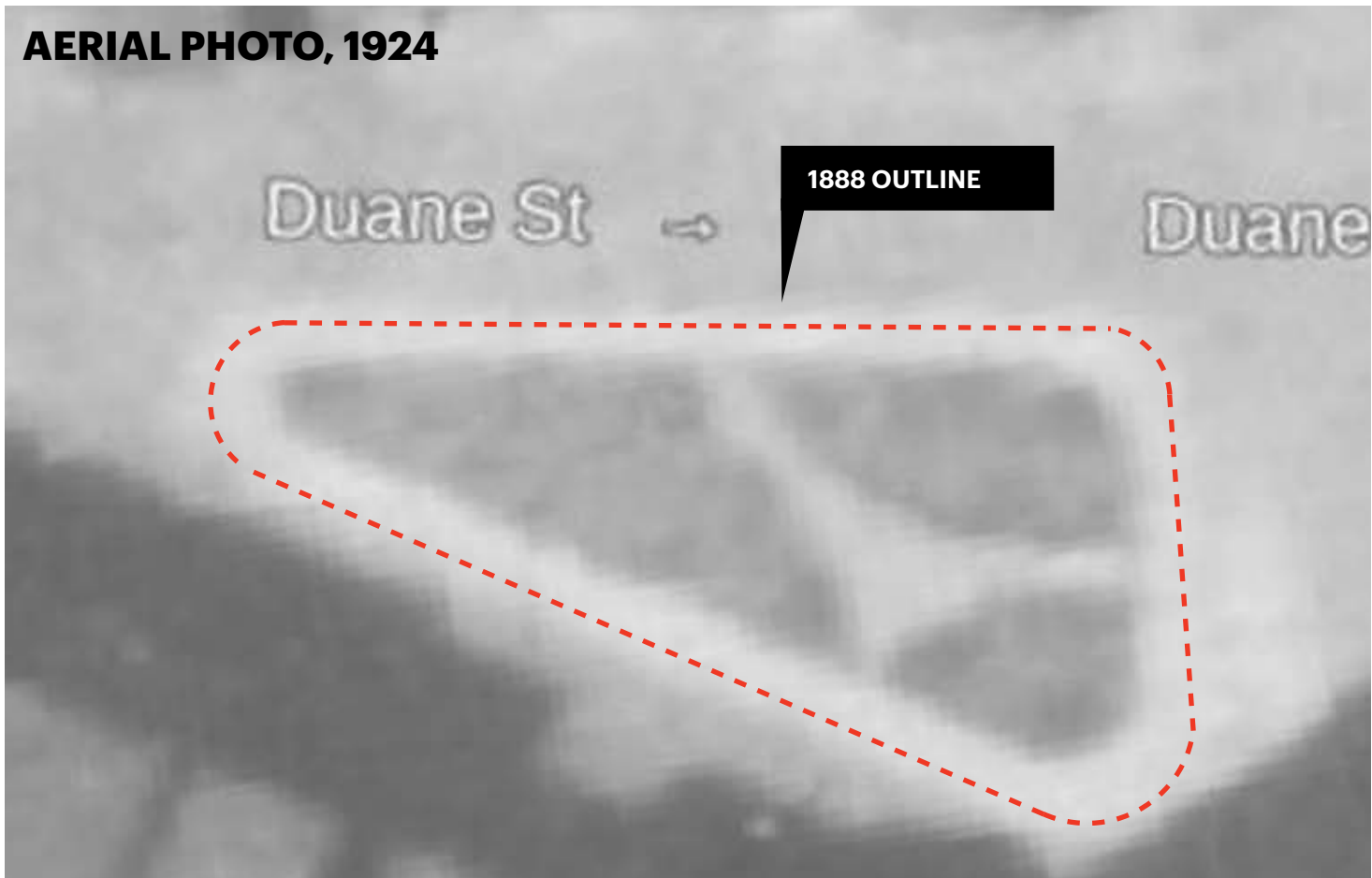
Duane Park, after 1998



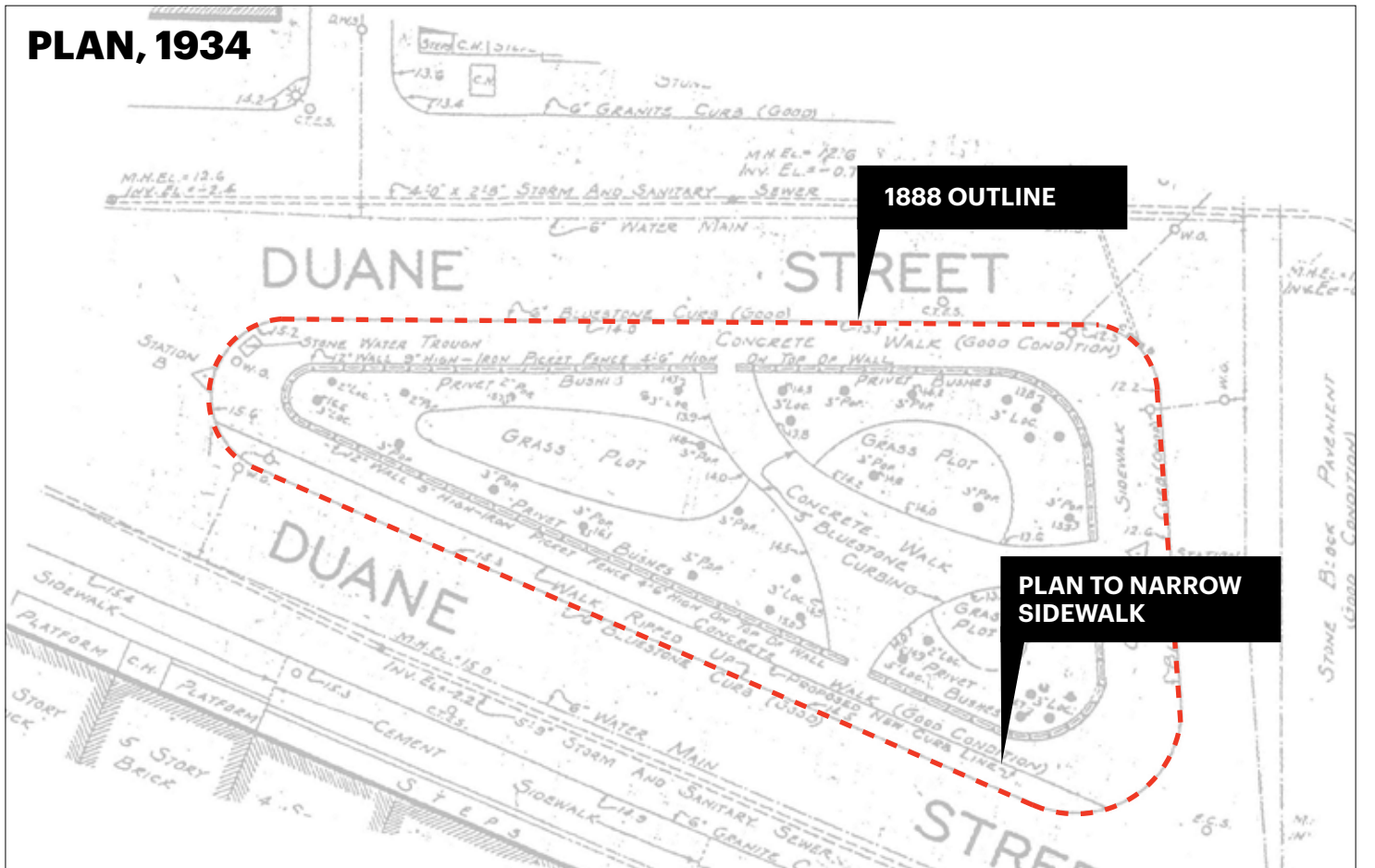
Duane Park, 1996-98 Plan



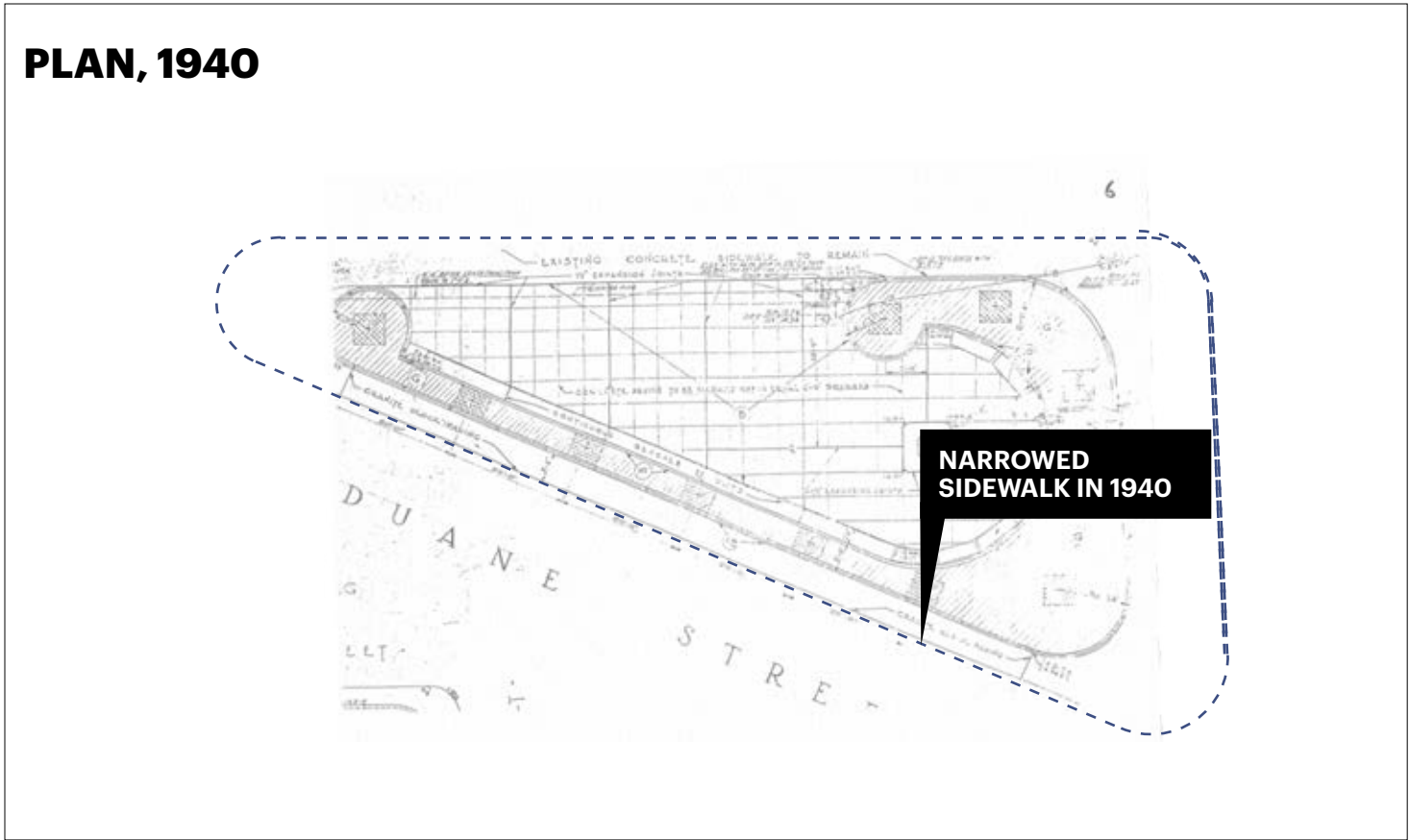
## AERIAL PHOTO, 1924



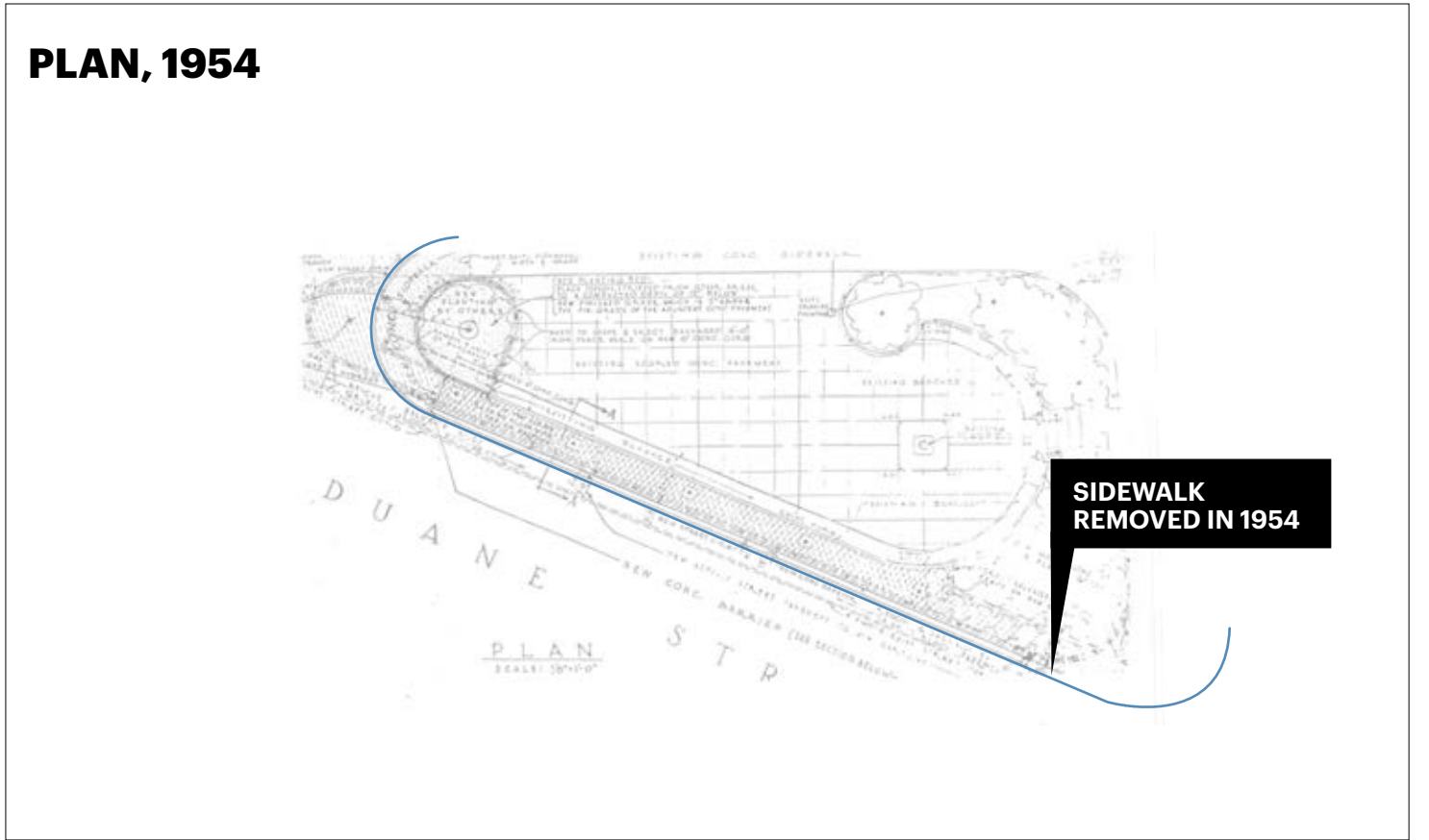
## PLAN, 1934



## PLAN, 1940

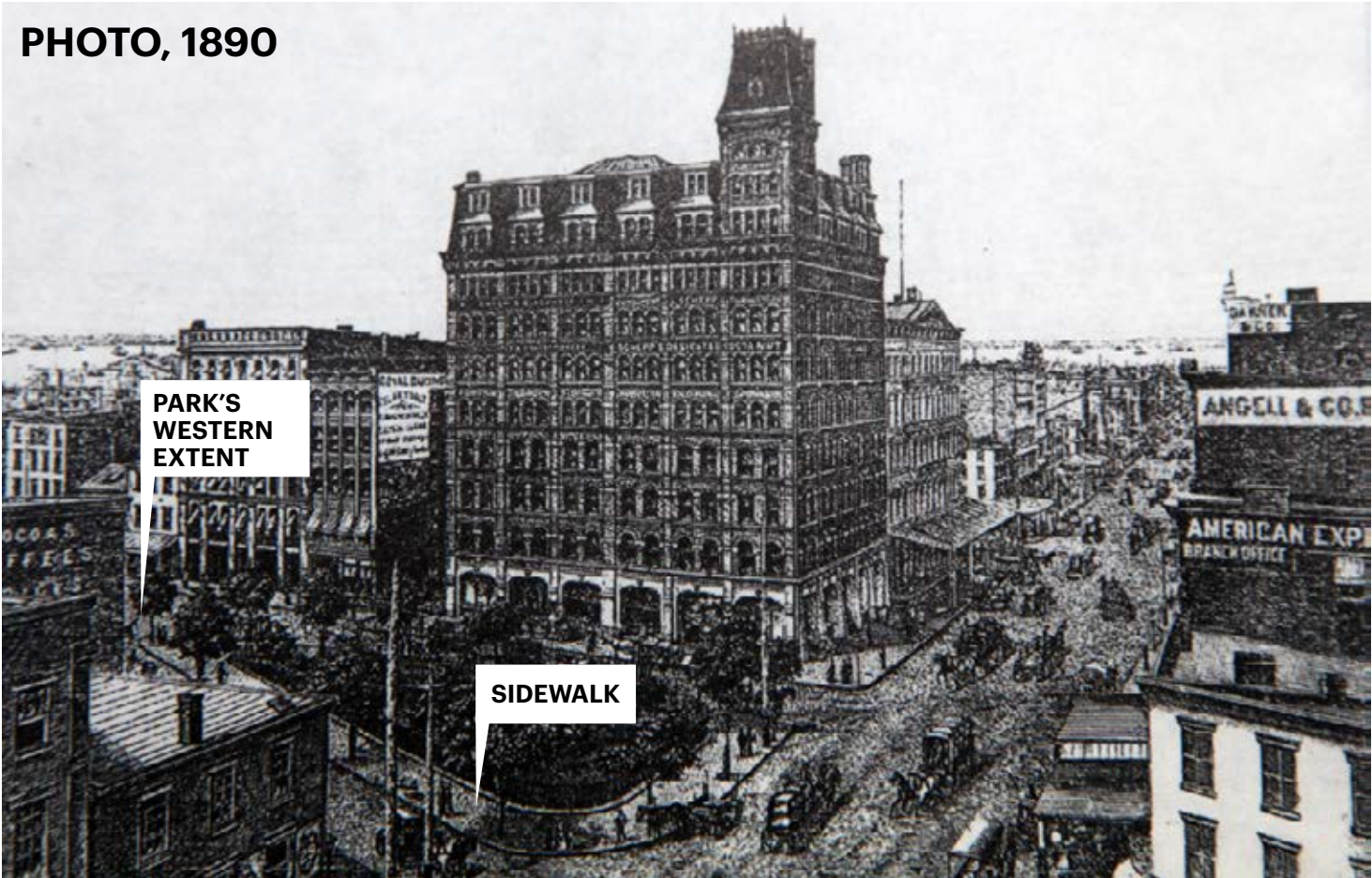


## PLAN, 1954





PHOTO, 1890



PHOTO, 1927



PHOTO, BEFORE 1998



PHOTO, AFTER 1998









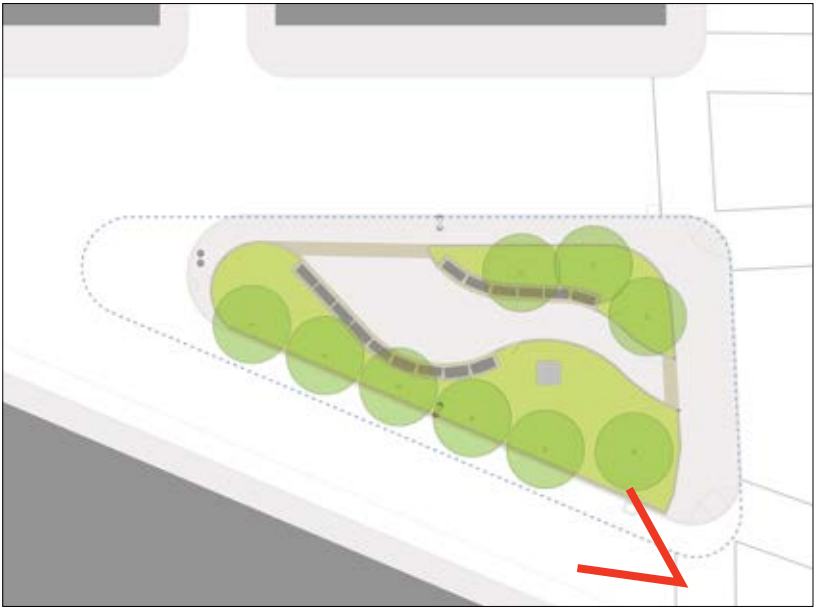




Existing Conditions



View of the south side of Duane Park.



KEY PLAN

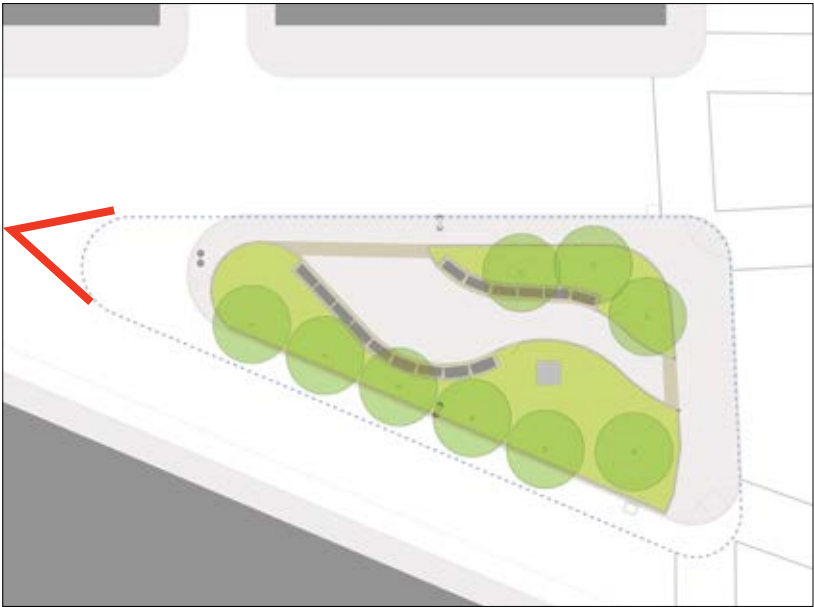


Existing Conditions



LOCATION OF THE  
PROPOSED PARK  
EXTENSION

View to west side  
of Duane Park



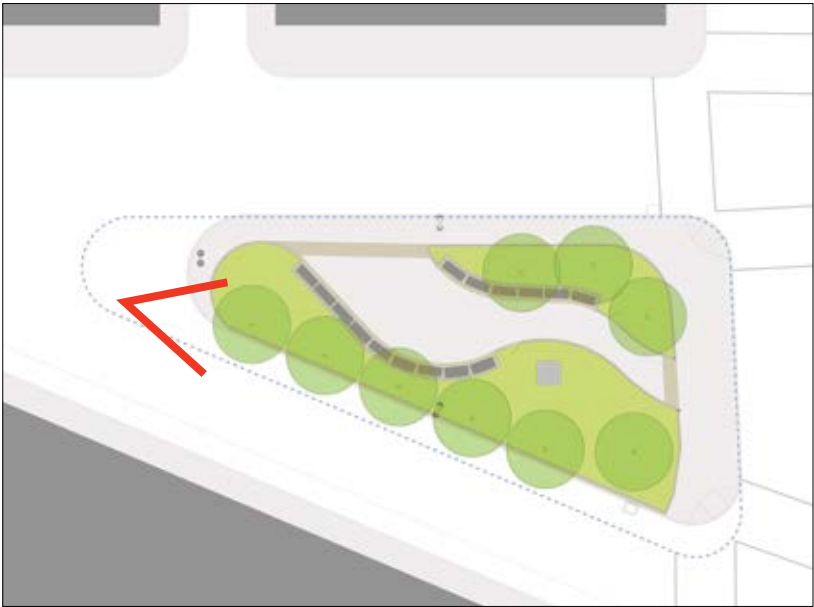
KEY PLAN





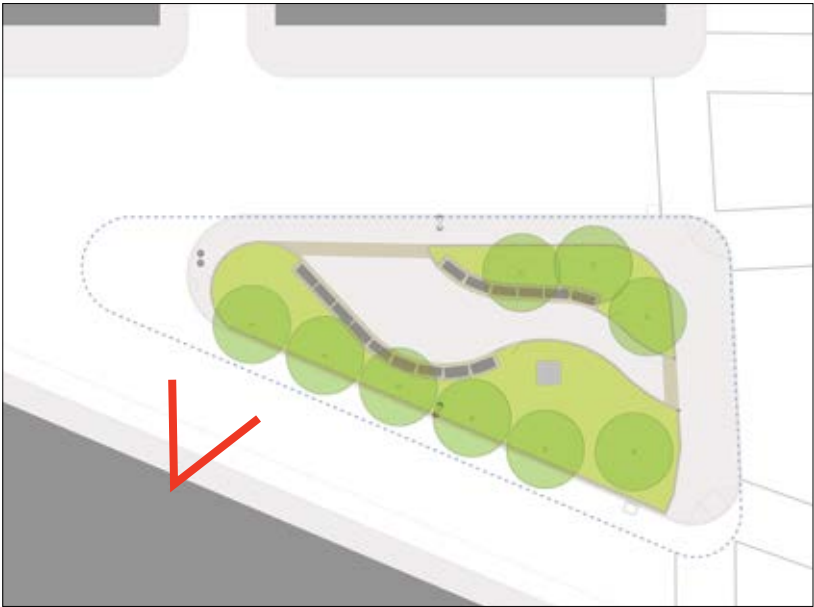
EXISTING ROAD  
WIDTH IS 33 FEET  
INCLUDING PARKING  
LANE

View of south side  
of Duane Park



KEY PLAN





KEY PLAN

View of west side  
of Duane Park



# What will become of reclaimed parkland?



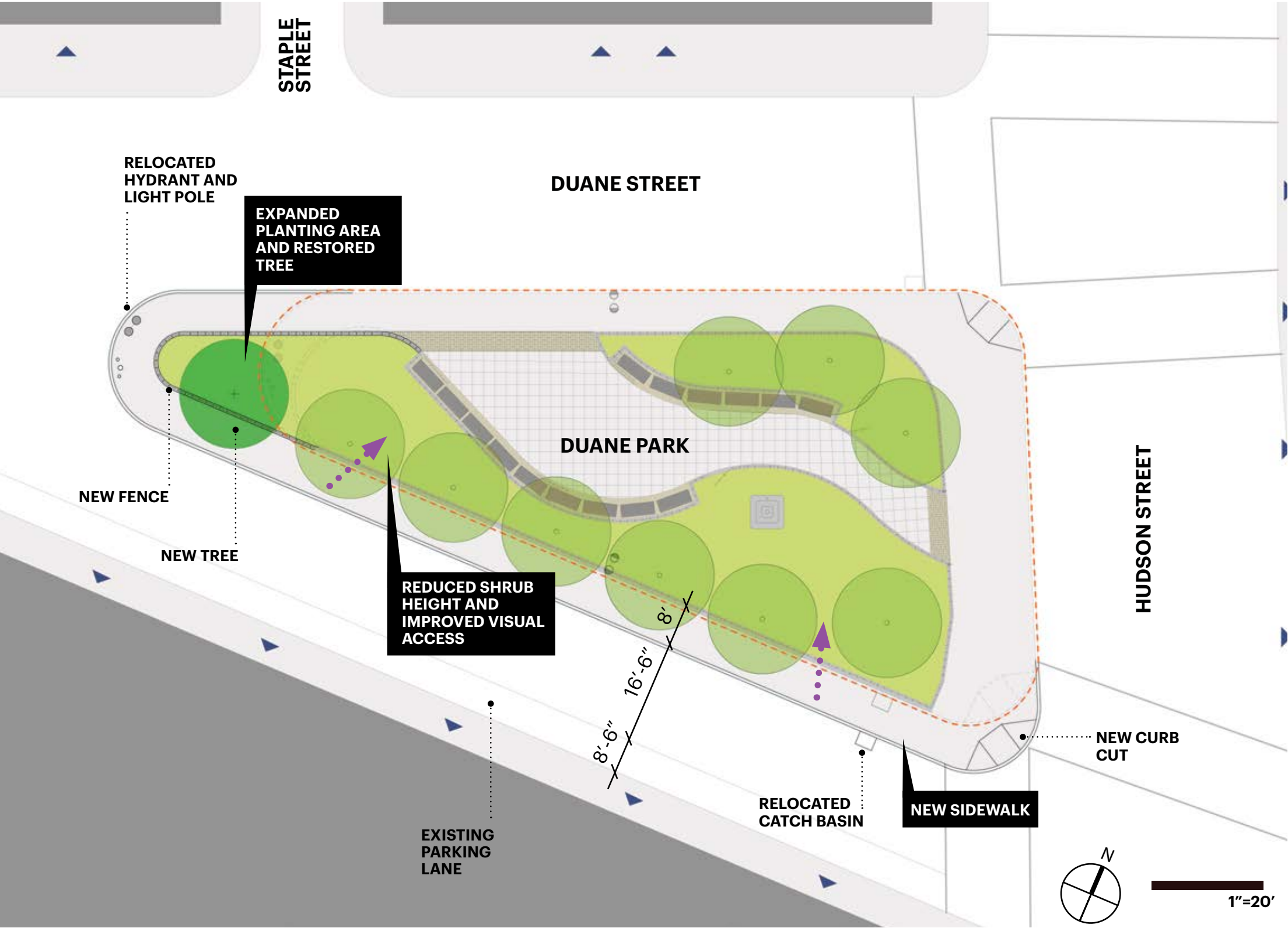


Our mission is to restore, preserve, and beautify Duane Park, and to build a community that cares for our park and other public spaces in Tribeca.

## Guiding Principles for Park Restoration Project

1. Restore historic footprint
2. Retain quiet and restful character
3. Improve pedestrian mobility
4. Improve visual connectivity on all sides
5. Restored tree reduces carbon, improves air quality
6. Restored planting area means better stormwater capture; good for resiliency
7. Reduced asphalt area reduces heat island effect







1. Strong Neighborhood Support – Block residents enthusiastic
2. City Agencies – Conceptual support from NYC Parks and DOT
3. Financial Support from Friends of Duane Park and elected officials



## Possible Language:

The community board supports the Friends of Duane Park in its effort to restore the park's historic footprint, restoring the sidewalk on the southern perimeter and the 10th tree on the park's western nose. It is the preference of the Community Board that this footprint be set aside explicitly for park use.